

Teppichkollektion

Sitzstufenpodeste & Kombibänke

PASSION 1000

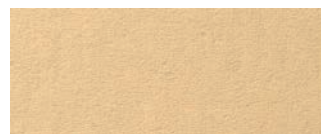
Polnutschicht: 100 % PA 6,6
Beschichtung: Texback® super
Grundmaterial: 100 % PES
Gesamtgewicht: ca. 1550 g/m²
Poldicke: ca. 5,4 mm
Gesamtdicke: ca. 8,0 mm
Brandverhalten: DIN EN 13501-1
Brandklasse: Cf-l-s1 (unverklebt oder verklebt)



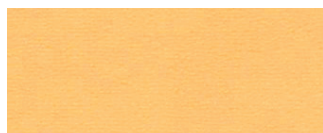
7F82 - Passion 1000



8A80 - Passion 1000



6A40 - Passion 1000



2F54 - Passion 1000



2D88 - Passion 1000



1B28 - Passion 1000



1D37 - Passion 1000



1H91 - Passion 1000



3D07 - Passion 1000



3N56 - Passion 1000



3N55 - Passion 1000



3H91 - Passion 1000



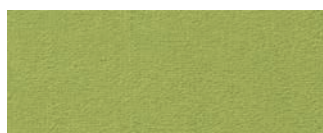
3N57 - Passion 1000



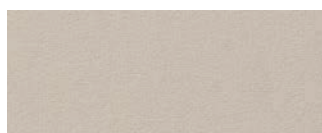
3N58 - Passion 1000



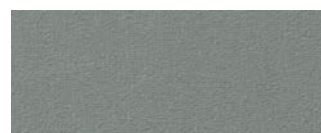
4F67 - Passion 1000



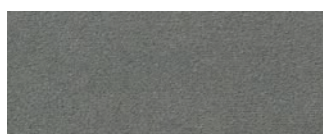
4D61 - Passion 1000



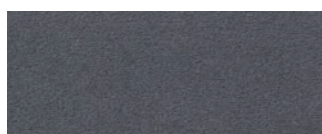
6B77 - Passion 1000



5B49 - Passion 1000



5B47 - Passion 1000



5B48 - Passion 1000



9A07 - Passion 1000