

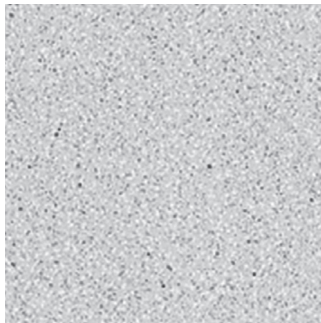
Plattendekore

Küchenarbeitsplatten

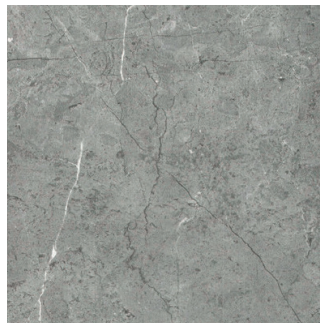
Küchenarbeitsplatten

Gesamtstärke: 30mm

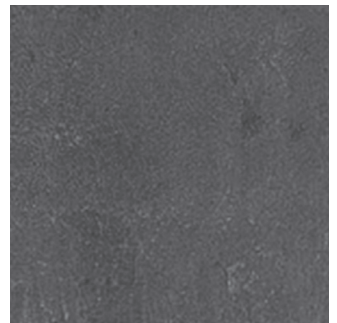
Rohspanplatte erhöht feuchtigkeitsbeständig mit 2 x 1mm HPL-Belag und umlaufender 5mm Vollkunststoffkante.



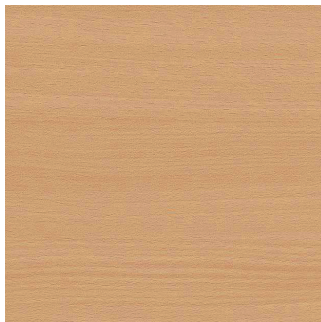
Terrano grau 0166



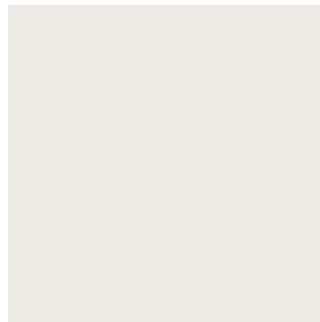
Castello 0501



Beton dunkel 0298



Buche natur 0352



Hellgrau 0009