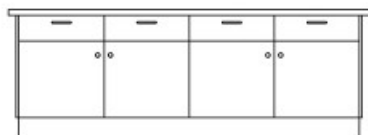


Product Sheet

24.04.2024



Model series	Scienza-Master
Description	Double lab table
Model	1267 F
ID	68580
Length/Width/Height	255/150/91 cm
Weight	447 kg

Dimensions: 255/150/91 cm, worktop 255/150/4 cm of large-surface porcelain stoneware composite panel, stoneware format 60/60 cm or 90/60 cm, beaded-edge tiles, plinth panels with bottom-sided sealing lip.

1 Inspection door incl. cover panels: 142/10/87 cm, top front panel 17.5 cm high, below it a inspection door with drilled stop damping on mounting frame 60 cm wide, hinges powder coated with automatic hold-closed function, cylinder locking device with flush-mounded cylinder, ventilation grille, 2 cover panels each 41 cm wide, mounted on the front side.

2 Base cupboards: 60/41/87 cm, front element, at the top a metal apron drawer, apron height 8.3 cm, full extension with self-closing and drawer damping, 1 metal bow handle, below a revolving door, aperture angle 270°, hinges powder coated with automatic hold-closed function, handle olive, drawer panel and revolving door with drilled stop damping, 1 height-adjustable shelf with drilled shelf assurance.

2 Base cupboards: 60/56/87 cm, at the top a metal apron drawer, apron height 8.3 cm, full extension with self-closing and drawer damping, 1 metal bow handle, below a revolving door, aperture angle 270°, hinges powder coated with automatic hold-closed function, handle olive, drawer panel and revolving door with drilled stop damping, 1 height-adjustable shelf with drilled shelf assurance, back panel removable from the inside.

2 Base cupboards: 120/56/87 cm, at the top 2 metal apron drawers next to each other, apron height 8.3 cm, full extensions with self-closing and drawer damping, each with a metal bow handle,

below 2 revolving doors, aperture angle 270°, hinges with automatic hold-closed function, each with a handle olive, drawer panels and revolving doors with drilled stop damping, center partition, 2 height-adjustable shelves with drilled shelf assurance, back panels removable from the inside.

1 Inspection door incl. cover panels: 142/10/87 cm inspection door with drilled stop damping on a mounting frame 30 cm wide, hinges powder coated with automatic hold-closed function cylinder locking device with flush-mounded cylinder, 2 cover panels each 56 cm wide, mounted on the front side.

Changes and errors reserved. Illustrations similar.