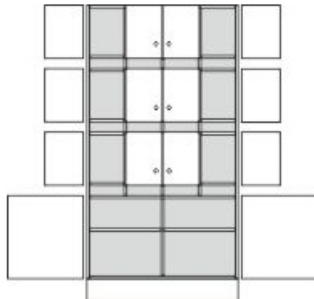


Product Sheet

24.04.2024



Model series

Armadio-Office

Description

Teachers compartment cupboard

Model

81380-S

ID

61516

Width/Depth/Height

105/45/205 cm

Weight

138 kg

for 12 teachers, with open shelves for post and lockable cupboard compartments.

Per cupboard compartment (at the top): 1 revolving door with drilled stop damping, aperture angle 270°, hinges with automatic hold-closed function, cylinder locking device with olive handle, different lockable.

Cupboard compartment (at the bottom): 2 revolving doors with drilled stop damping, aperture angle 270°, hinges with automatic hold-closed function, cylinder locking device with olive handle, center partition, 2 height-adjustable shelves with drilled shelf assurance, plastic plinth panel with bottom-sided sealing lip.

Changes and errors reserved. Illustrations similar.